

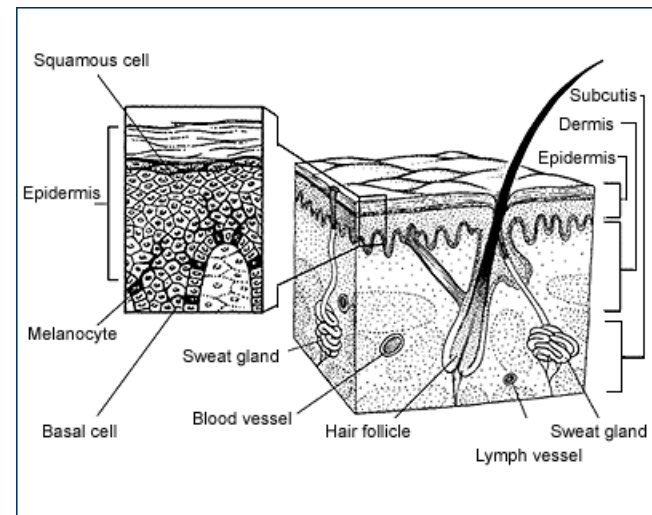
# *Eyelid Skin Cancer*

---

*Kimberly Cockerham, MD*  
*Central Valley Eye Medical*  
*Group*

# Skin Cancer is on the Rise

- Listen
  - Ask the right questions
- Look
  - For warning signs
- Feel
  - The region of interest



# Skin Cancer

As common as all other cancers combined

---

- **1.5 million** new skin cancers this year\*
  - Basal cell carcinomas (80%)
  - Squamous cell carcinomas (15%)
  - Melanomas (4%)
  - Sebaceous cell carcinoma (1%)

*\*American Cancer Society Estimate*

# Classic Risk Factors

---

- ❑ Elderly Caucasian
- ❑ Light complexion/Blue eyes
- ❑ Actinic damage
- ❑ Cigarette Smoking

# Skin Cancer

---

- More than 90% of non-melanoma skin cancer is caused by sun exposure
- Unprotected exposure
  - Outdoors, even in the fog
  - Tanning booths
  - Through car, home, or office windows
- Only 33% of women and 10% of men wear daily sunblock

[www.skincancer.org](http://www.skincancer.org)

# Skin Cancer Statistics

---

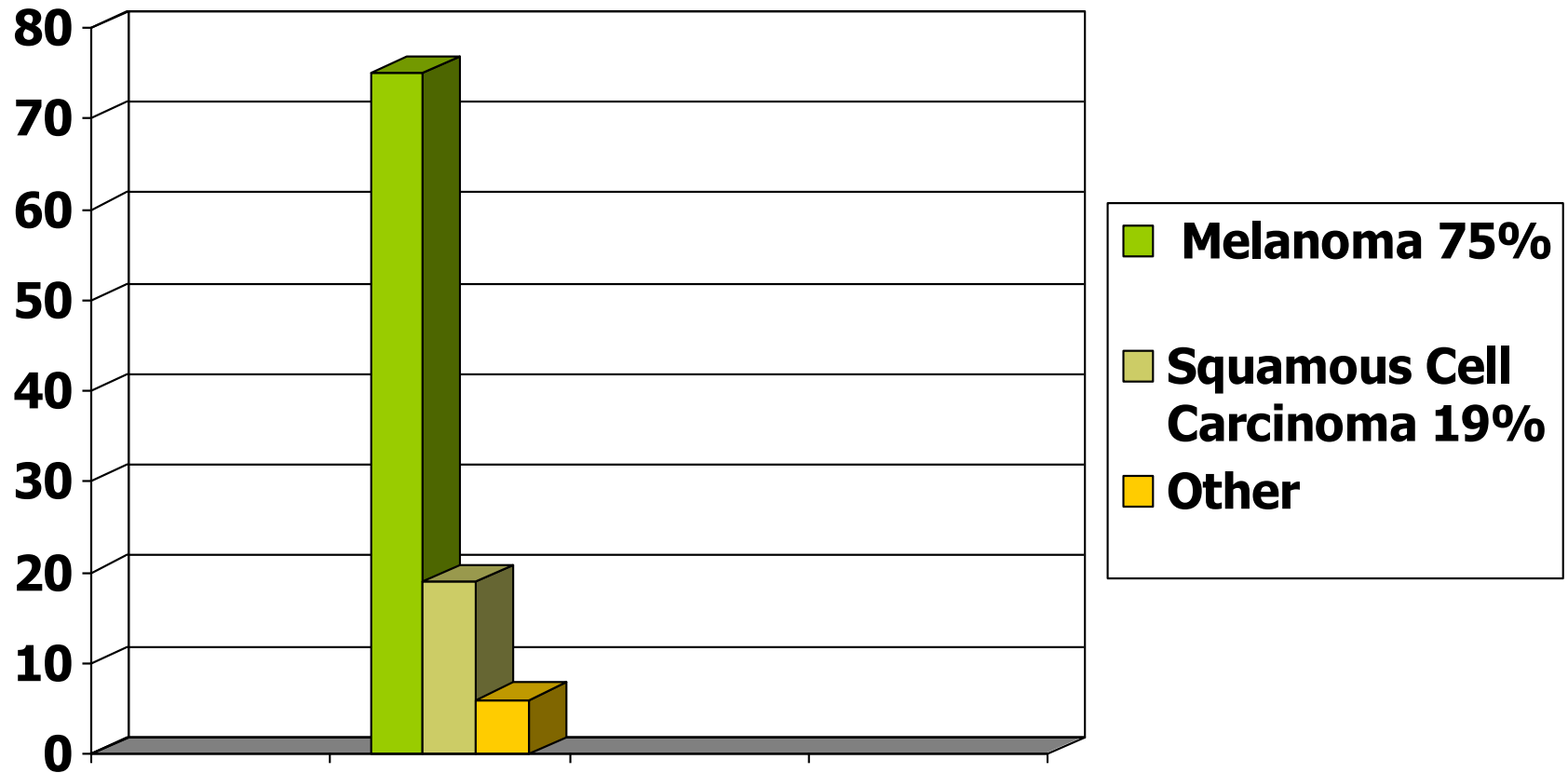
- Incidence of has tripled since 1980
- 1 in 5 Americans will be diagnosed with skin cancer (1 in 3 Caucasians)
- Men > Women 2 : 1
- Early detection is crucial



American Cancer Society Data

# Deaths Due to Skin Cancer

---



# Skin Cancer:

## In The Young

---

- Dramatic Increase in People < 30:
  - Melanoma has tripled
  - Squamous cell carcinoma doubled
  - Basal cell carcinoma have doubled





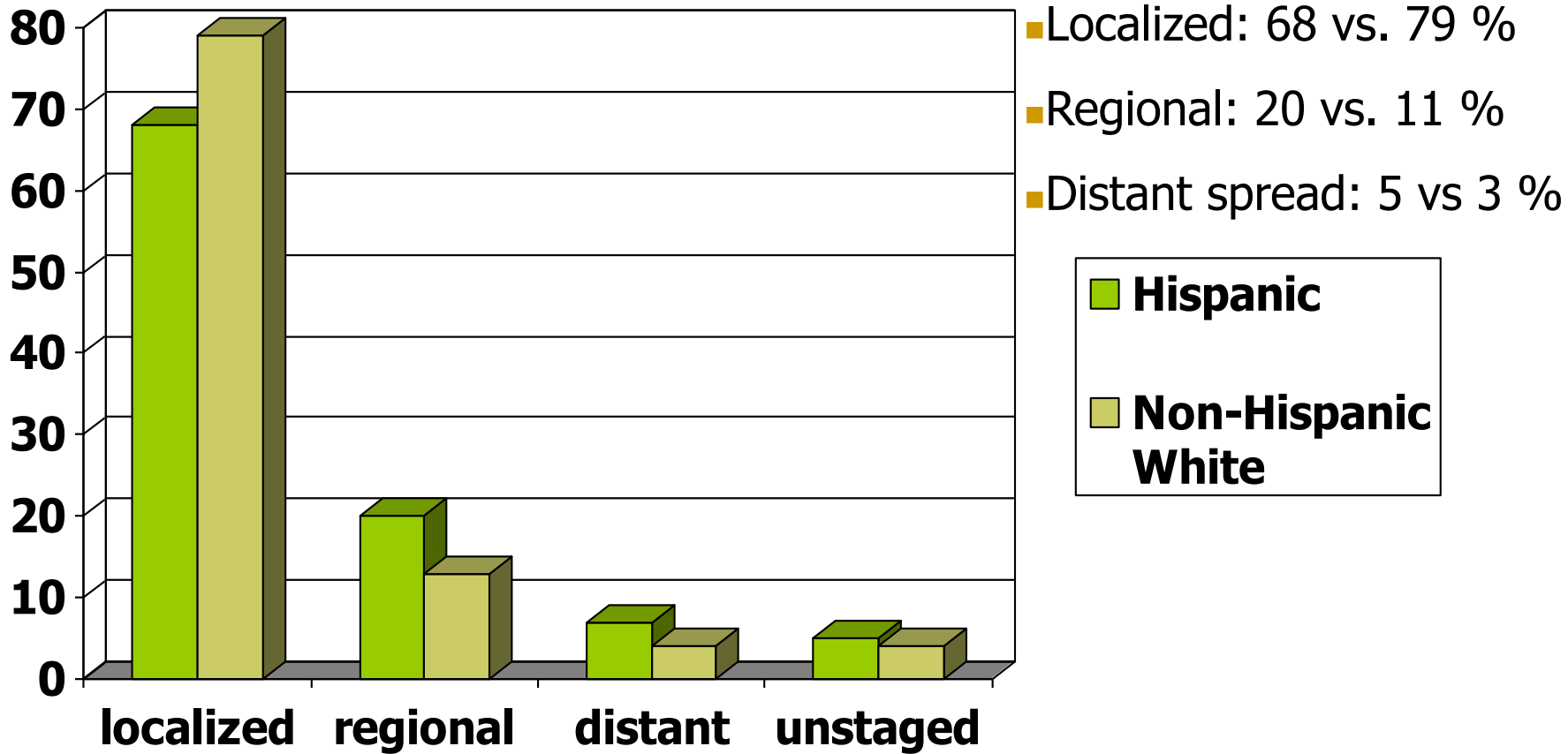
# Watch Out:

## Skin Cancer Occurs in Non-Caucasians!

---

- Melanoma of the skin
- More likely to be diagnosed later
- **Hispanic: birth to death risk**
  - Male: **1 in 221**
  - Female: **1 in 205**

# Melanoma of the Skin



# The History

---

- Have you had a prior skin cancer ?
  - **If history of BCCA -> 50% have second lesion at 5 years**
  - **If history of SCCA -> 75% have second lesion at 5 years**
- Think beyond the face:
  - Women: lower legs
  - Men: back

# The History

---

- ❑ Intermittent itching ?
- ❑ Intermittent scaling or scabbing ?
- ❑ Irritation when wearing glasses ?

# Medial Canthal Region Common

---



Beware of the "irritation due to eyeglass fit"!

# Warning Signs – ABCDE

---

- **A**symmetry
  - Draw a line down the center
- **B**order irregularity
  - Uneven, scalloped or notched
- **C**olor variations
  - Brown, tan, black mixed with red, white or blue
- **D**iameter
  - > Pencil's eraser
- **E**volution
  - ANYTHING NEW

# Cancer:

Doesn't always follow the rules

---



# Warning Signs – ABCDE

---

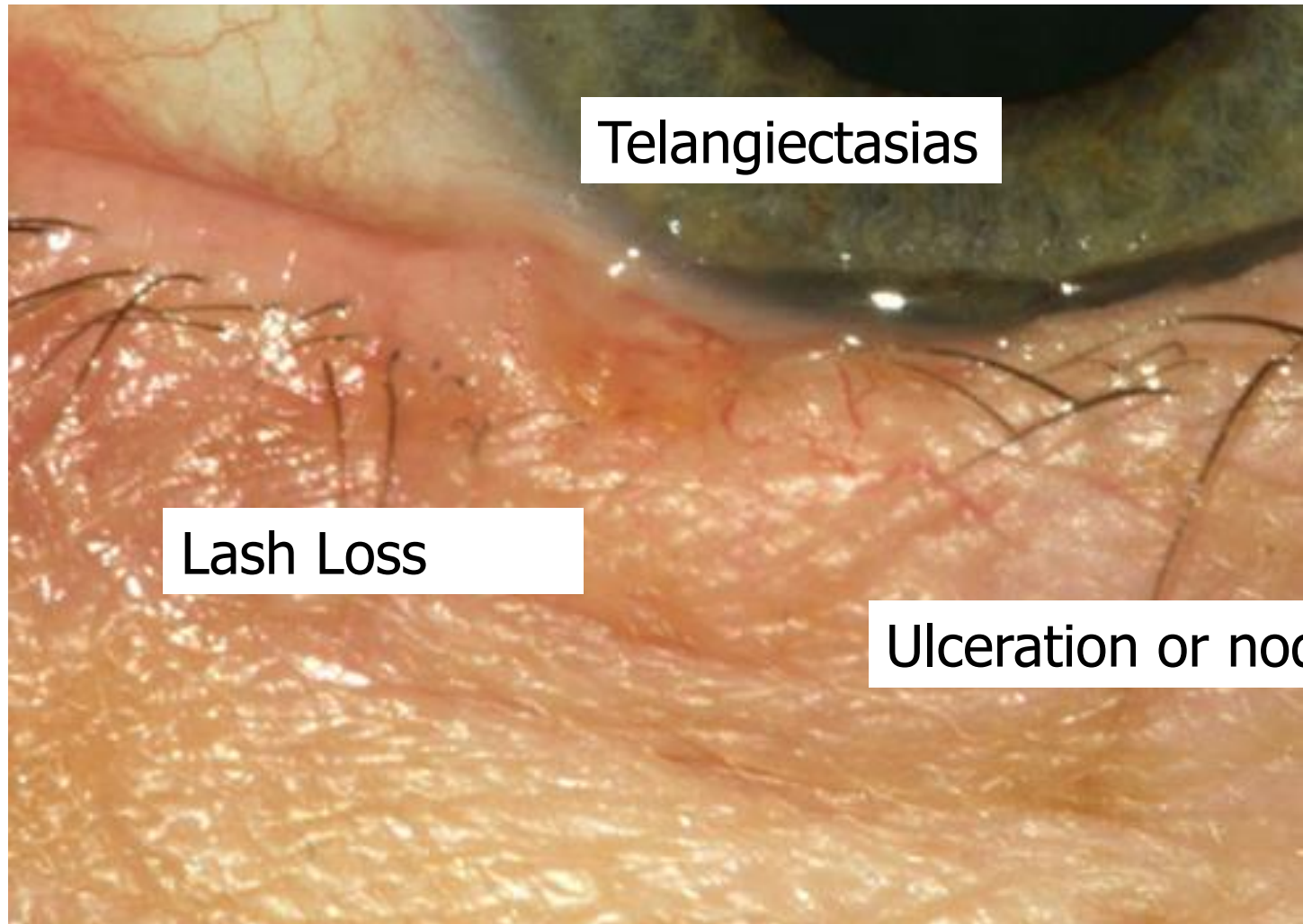
- Evolution = ANYTHING NEW
  - Grows or shrinks (suddenly)
  - Irritation, redness
  - Scaling
  - Crusting, oozing or bleeding
  - Tenderness or pain
  - Itchy





# Basal Cell Carcinoma

---



Telangiectasias

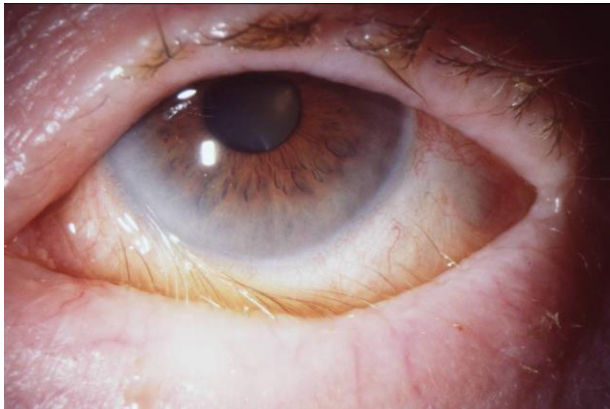
Lash Loss

Ulceration or nodule

# Eyelid Specific Features

*Look for warning signs*

- Chronic conjunctivitis
- Eyelid malposition
  - Ectropion
  - Entropion
  - Ptosis



# Sebaceous Cell Carcinoma

## The Worst Offender

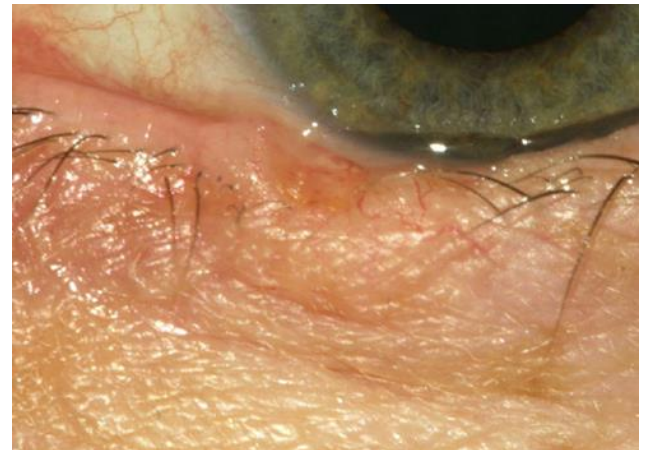
---

- ❑ Least common
- ❑ 50% misdiagnosed
- ❑ Average age: 72 years old
- ❑ Women: Men = 2:1
- ❑ Ectropion/entropion 10%
- ❑ Caruncle 5%
- ❑ Chronic conjunctivitis, cyst or pannus

# Palpation is Important

---

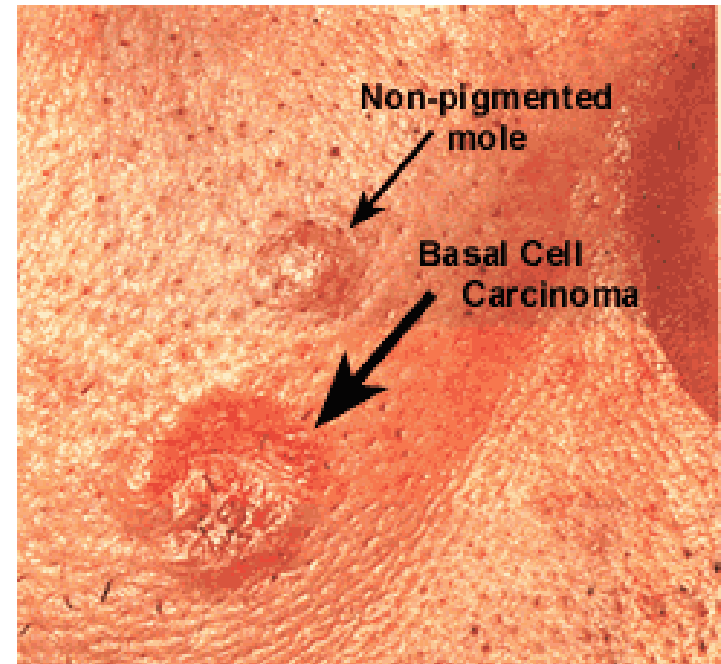
- *Feel the region of interest*
  - **Firm**
  - Irregular
  - Nodular
- *Check for Lymph Nodes*



# Clinical Series of 136 Eyelid Lesions

---

- ❑ It is impossible to always guess correctly
- ❑ 16% “presumed benign lesions” were carcinomas
- ❑ Don’t burn, destroy or throw away anything



# Sunblock

---

- Apply on a daily basis
- Multiple applications are necessary (every two hours)
- Protect at all times, even when driving in your car

# Micronized Zinc

---

- Indications: Protection from sun damage
- Result of 30 years of R&D
- Easy-to-use retractable brush for:
  - Eyelids
  - Ears
  - Balding heads
  - Hands
  - Multiple applications
  - Applying over make-up

# Micronized Zinc

---

- ❑ Works best on skin that is moisturized
- ❑ No greasy mess / No thick, white goop
- ❑ Doesn't burn eyes – great for eyelids!
- ❑ Men should pay particular attention to the tips of the ears – this area tends to be neglected and is prone to skin cancer.
- ❑ FDA approved for infants > six months old
- ❑ Refillable powder